

DIMENSIONS IN METRIC DO NOT SCALE DRAWING

ENG. NO. 0*04
SD-70021-0*21

EDP NO. #

8

7

6

5

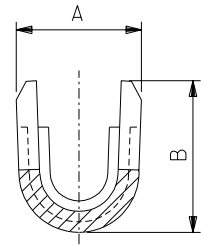
4

3

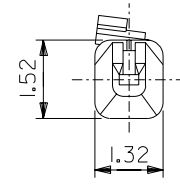
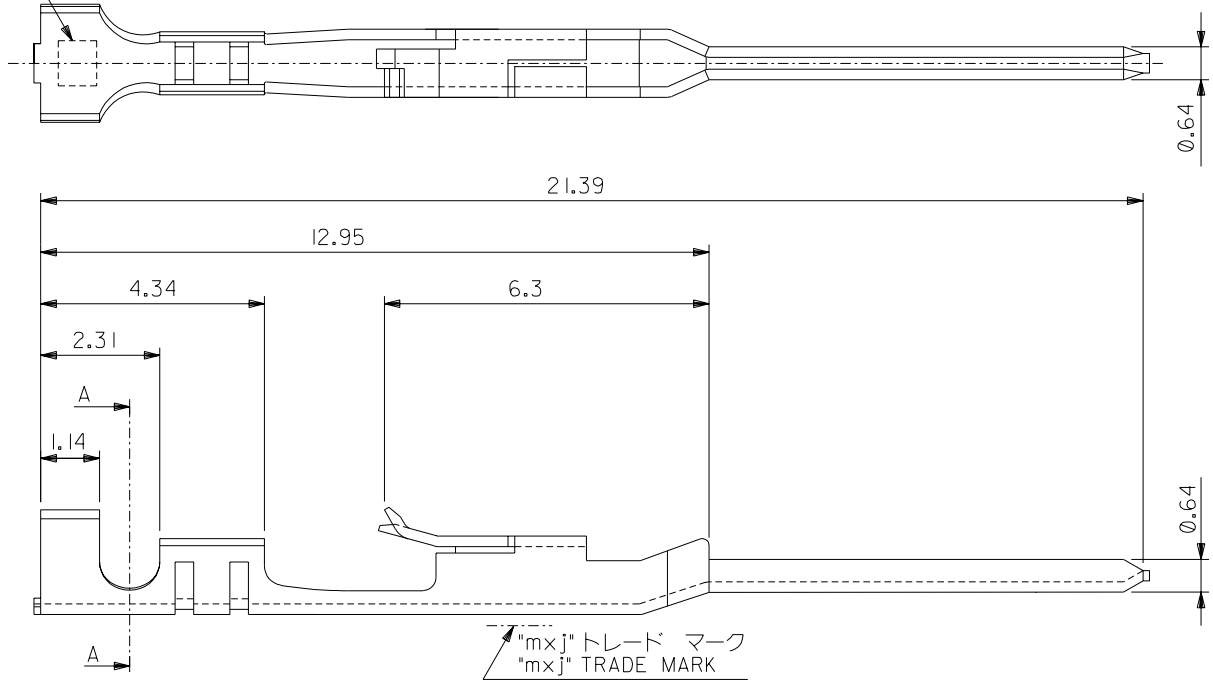
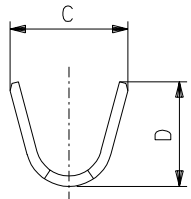
2

1

適用電線表示
CRIMP SIZE CODE LETTER



断面 A-A
SECTION A-A
(SCALE:20-1)



注記:
NOTES:

- 適合ハウジング: 70066-****, 70107-****
APPLICABLE HOUSING: 70066-****, 70107-****
- 仕上げ ニッケル下地、錫メッキ
FINISH TIN OVER NICKEL PLATING

1.91	2.1	1.47	1.22	A	φ 1.6 MAX.	AWG#24-#30	バラ状 LOOSE	70021-0204
							連鎖状 CHAIN	70021-0004
1.91	2.1	1.65	1.84	C		AWG#22-#24	バラ状 LOOSE	70021-0221
							連鎖状 CHAIN	70021-0021
D	C	B	A	適用電線表示 CRIMP SIZE CODE LETTER	被覆外径 INS. RANGE	適用電線範囲 WIRE RANGE	端子形状 FORM	MATERIAL No.

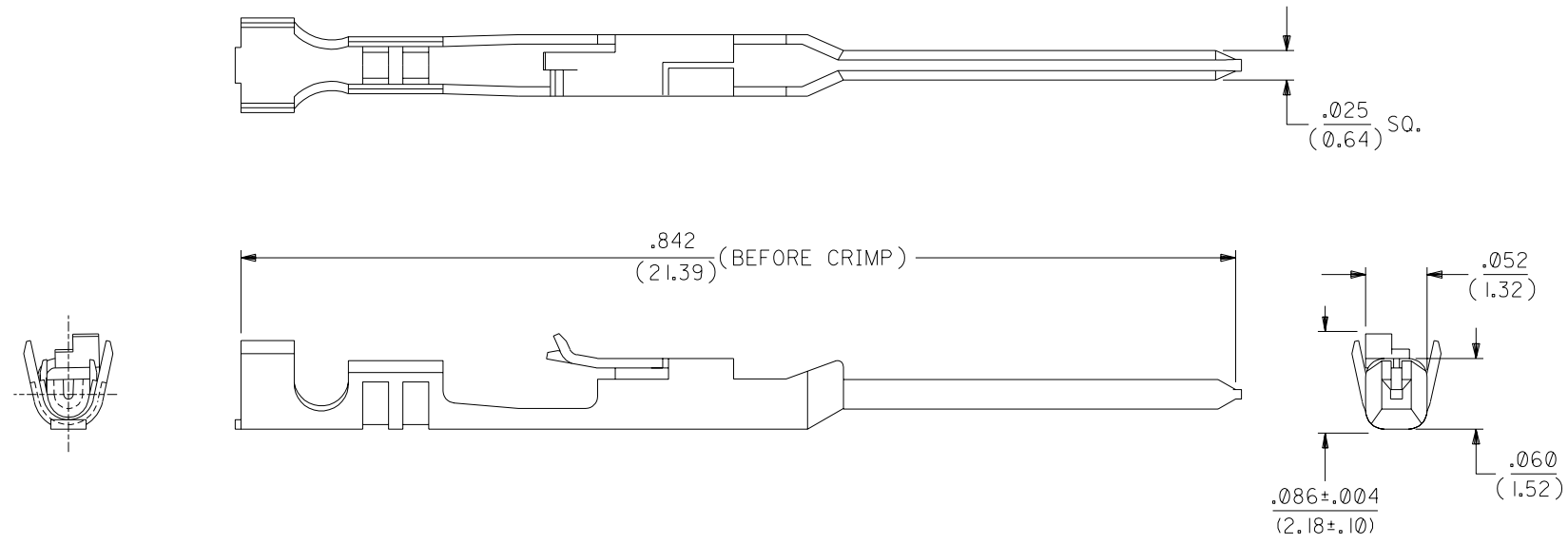
材料 MATERIAL		磷青銅 PHOSPHOR BRONZE		t 0.203		MOLEX-JAPAN CO.,LTD. 日本モレックス株式会社	
仕上げ FINISH		注記参照 SEE NOTES		EDP. NO.		#	
適用電線範囲 WIRE RANGE		表参照 SEE CHART		適用電線範囲 WIRE RANGE		表参照 SEE CHART	
被覆外径 INS. RANGE		表参照 SEE CHART		DRAWN BY A. Mitake		CHK'D BY A.A. M. Ryo	
角度 ANGLE		+3°		REVISION RECORD		DR. DATE	
30°以上 OVER		+0.3		A		REVISOR	
10°以上 30°未満 OVER UNDER		+0.25		0		REVISION RECORD	
10°未満 UNDER		+0.2		LTR		REVISION RECORD	
一般公差 GENERAL TOLERANCES		REVISE ONLY ON CAD SYSTEM					

EDP. NO. #

ENG. NO. SD-70021-0*04
0*21

REV B

TITLE 名称
SL MALE CRIMP TERMINAL
-LEAD FREE-



NOTES:

1. TERMINAL FOR USE WITH HOUSING PART NO. 70066-**** & 70107-****.
2. MATERIAL: .008/(0.20) THK. PHOSPHOR BRONZE.
3. TERMINAL TO BE USED WITH 24-30 AWG STRANDED WIRE WITH .060 DIA. MAX. INSULATION.
4. REFER TO MOLEX OPERATIONAL AND SERVICE MANUAL FOR DETAILS.
5. REFER TO PRODUCT SPECIFICATION NO. PS-70021.
6. PARTS SUPPLIED LOOSE PER DRAWING PK-70873-0822.

PLATING:

.000150 MIN. TIN PLATE
OVER NICKEL PLATE.

*THE PRIMARY SHIPPING CARTON WILL BE LABELED "COMPLIANT TO RoHS DIRECTIVE 2002/95/EC AND ELV ANNEX II OF DIRECTIVE 2000/53/EC". CARTONS WITHOUT THIS LABEL MAY CONTAIN PRODUCT WITH LEAD.

D	LEAD FREE UCP2004-1769 RWHITE 04/03/15
C2	REVISED PER ECR #U80270 MCGRATH 97/07/31
C1	REVISED PER ECR #U70928 MCGRATH 97/06/26
C	164 PLTG. WAS 102 PER ECR # U31149 08/19/93 REED
B	REDRAWN ON CAD PER ECR # 9509 11/10/86 WJF/MJM

MFG.	SH.	REV.	LTR.	REVISIONS
------	-----	------	------	-----------

DIMENSIONS SHOWN (METRIC) INCH		▽ = 0 ▼ = 0		REVISE ONLY ON CAD SYSTEM	
UNLESS OTHERWISE SPECIFIED TOLERANCES: ANGULAR ± 1/2°					
		INCH		METRIC	
3 PLACE	± .010	---			
2 PLACE	± .015	± 0.25			
1 PLACE	---	± 0.35			
DRAFT WHERE APPLICABLE MUST REMAIN WITHIN DIMENSIONS					
DRWG. BY	WJF	CHK'D. BY	MJM		
APP'D. BY	WAZ	SCALE	10:1		
FILE NAME		SHEET NO.		DATE	
S70021X4 DGN		1		10/30/86	
PART NO.		DRWG. NO.			
16-02-0108		SD-70021-0204			
THIS DRAWING CONTAINS INFORMATION THAT IS PROPRIETARY TO MOLEX INC. AND SHOULD NOT BE USED WITHOUT WRITTEN PERMISSION.					
				DIV.	SIZE
				DA	B